

830

W. CLINTON ST.

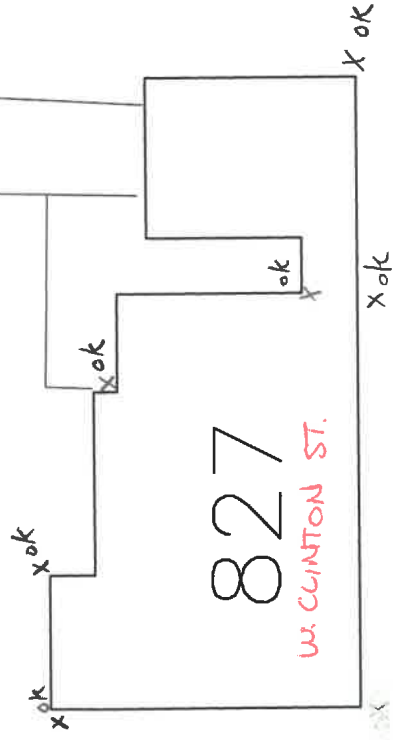
8-22-12

INSPECTED BY: MARTY CROSSLAND
INVESTIGATION OF ILLEGAL DOWN-
SPROUT CONNECTIONS AT 827
W. CLINTON. SIX ILLEGAL
CONNECTIONS WERE FOUND AND
CORRECTED.

827

W. CLINTON ST.

N
1" = 20'



SCANNED